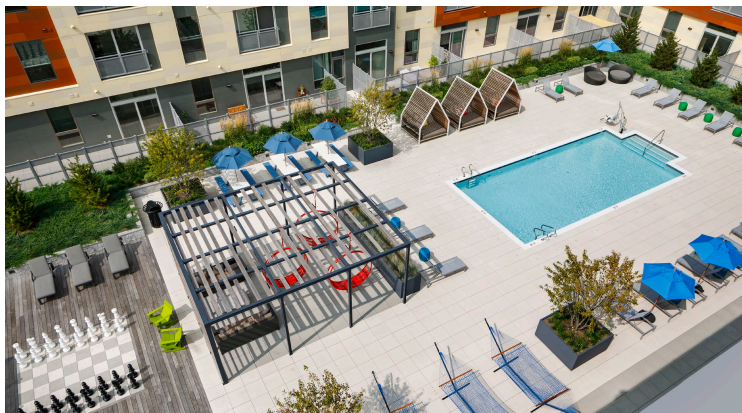




Jefferson Apartments Malden, Massachusetts

- TYPE
Commercial
- SIZE
26,500 sq. ft.
- COMPLETION
July 2019

In the summer, residents enjoy flowering hydrangeas, black-eyed susans, and chives from the shade of river birch and amelanchier trees.



PROJECT INFORMATION

Client
**Callahan/Jefferson
Apartment Group**

Green Roof Type
Amenity, Intensive

Plant Types
**Perennials,
Shrubs, & Trees**

Landscape Architect
Copley Wolff

Architect
CBT

Green Roof Installer
Recover Green Roofs

General Contractor
Callahan

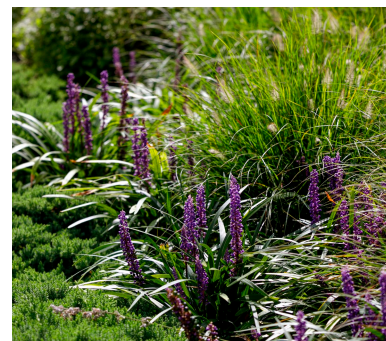
Hardscaping &
Decking Installer
Recover Green Roofs

Hardscaping Materials
Wausau Tile

Planter Fabrication
**ViewPoint Metals &
Planters Unlimited**

Green Roof Components
ZinCo

Soil Media Supplier
Naturcycle



Top left to bottom right: Pool deck with CMU planters, powder coated planters, pergola, and pedestal pavers || Powder coated planters, CMU planters, and turf lawn || Flowering perennials and grasses in CMU planters

The 25,000-square-foot, second-floor courtyard features an outdoor kitchen, pool, turf lawn, and full-size chess board, while the 2,000-square-foot, fifth-floor roof deck showcases an expansive view of Boston's skyline. The design of the two outdoor living areas allows for dynamic use by residents, providing the option of shared or private seating spaces.

Recover's scope included the installation of 12,000 square feet of pavers and decking, custom and prefabricated planters, two steel and wood pergolas, concrete countertops and appliances for the outdoor kitchen, turf lawn, chessboard, soil media, trees, and perennials plantings. Installation required managing cranes and a blower truck on this busy job site.