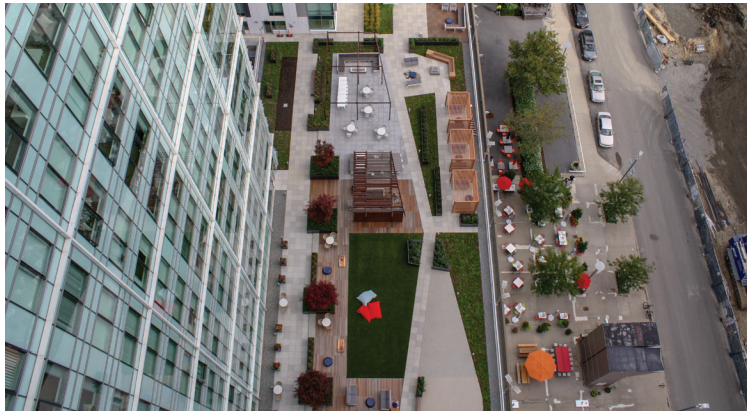




Watermark Kendall Terrace Cambridge, Massachusetts

- TYPE
Commercial
- SIZE
15,000 sq. ft.
- COMPLETION
August 2018

Each seating area is buffered by planters of flowering perennials, creating comfortable spaces for groups and individuals on the nearly half-acre amenity roof.



In 2018, Recover completed the selective demolition of an older amenity space and worked with CRJA-IBI Group to build a more modern and user-friendly terrace that connects adjacent residential towers in Cambridge's Kendall Square.

The new terrace features a custom outdoor kitchen and numerous leisure space, including a large exercise safety surface and synthetic turf lawn, a sleek media lounge, and wood privacy pergolas.

Recover handled the installation of nearly all scopes above the waterproofing, including: pavers, decking, synthetic surfaces, precast concrete steps, custom steel pergola and light trellis, steel planters, irrigation, and the outdoor kitchen. The numerous intersecting surfaces and overhead features were carefully designed and painstakingly executed to create long parallel lines and clean geometric patterns.



Top left to bottom right: 21-story view shows modern geometric pattern of new rooftop terrace / Outdoor kitchen with custom concrete countertops and steel pergola / Japanese Maples add color to the roof along with carefully selected pollinator-friendly plant

PROJECT INFORMATION

- Client Name
Gables Residential
- Green Roof Installer
Recover Green Roofs
- Landscape Architect
CRJA-IBI Group
- General Contractor
Nauset Construction
- Selective Demolition
Recover Green Roofs
- Hardscaping Installer
Recover Green Roofs
- Hardscaping Materials
Bison
- Decking & Carpentry
Recover Green Roofs
- Kitchen & Amenities
Recover Green Roofs
- Steel Fabrication
Goshange
- Plant Types
Sedum, perennial grasses, Japanese Maples and shrubs
- Waterproofing
Firestone by Boston Roofing